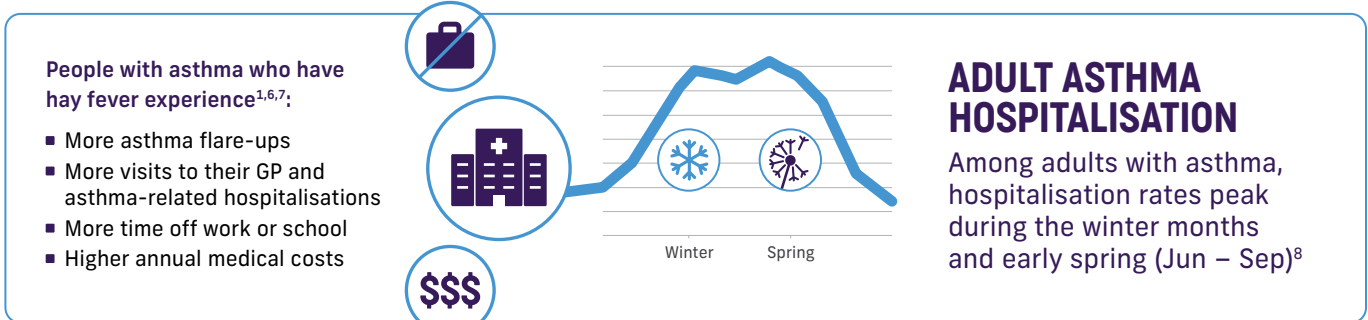
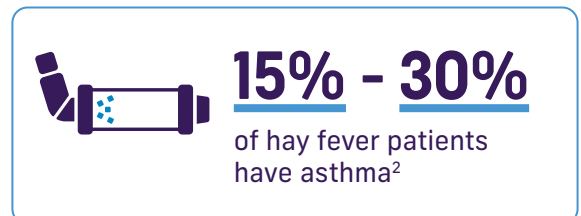
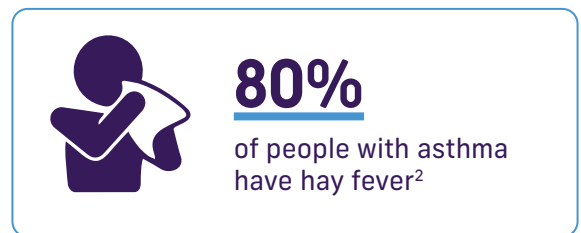
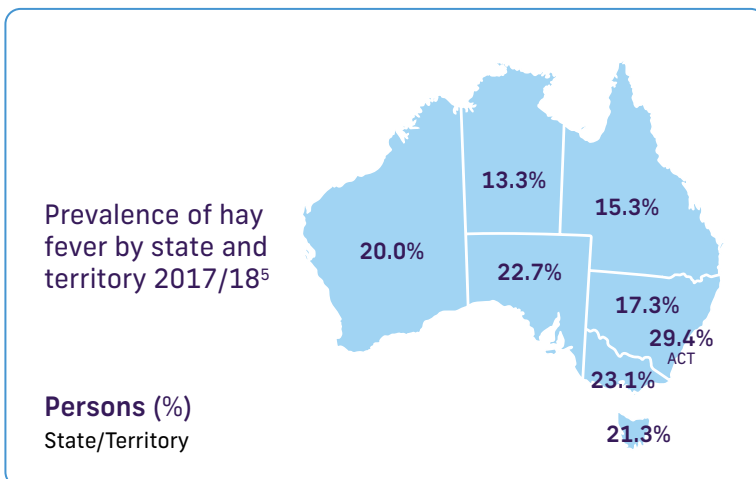
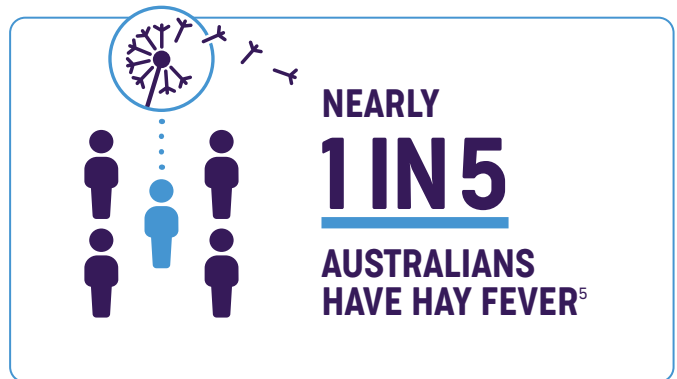


ASTHMA & HAY FEVER



Asthma and hay fever (allergic rhinitis) are closely linked, so managing hay fever and allergies is an important part of asthma care. Better control and management of hay fever has been shown to improve asthma control in both adults and children. ^{1,2,3,4}



For more information about asthma and allergies:

1800 ASTHMA
(1800 278 462)
asthma.org.au

- Price D, Zhang Q, Kocevar VS, et al. Effect of a concomitant diagnosis of allergic rhinitis on asthma-related health care use by adults. *Clin Exp Allergy*. 2005; 35: 282-7. Available from: <http://www.ncbi.nlm.nih.gov/pubmed/15784104>
- Bousquet J, Khaltaev N, Cruz A, Denburg J, Fokkens W & Togias A 2008. Allergic Rhinitis and its Impact on Asthma (ARIA) 2008 update (in collaboration with the World Health Organization, GA(2)LEN and AllerGen). *Allergy* 63:8-160
- de Groot EP, Nijkamp A, Duiverman EJ, Brand PL. Allergic rhinitis is associated with poor asthma control in children with asthma. *Thorax*. 2012; 67: 582-7. Available from: <http://www.ncbi.nlm.nih.gov/pubmed/22213738>
- Thomas M, Kocevar VS, Zhang Q, et al. Asthma-related health care resource use among asthmatic children with and without concomitant allergic rhinitis. *Pediatrics*. 2005; 115: 129-34. Available from: <http://pediatrics.aappublications.org/content/115/1/129.long>
- Australian Bureau of Statistics 2018; National Health Survey: First Results 2017-18. ABS Cat no. 4364.0.55.001. Canberra: ABS
- Bousquet, J., Gaugris, S., Kocevar, V. S., Zhang, Q., Yin, D. D., Polos, P. G. and Bjerner, L. (2005). Increased risk of asthma attacks and emergency visits among asthma patients with allergic rhinitis: a subgroup analysis of the improving asthma control trial. *Clinical & Experimental Allergy*, 35: 723-727
- Pawankar R, Bunnag C, Chen Y, et al. Allergic rhinitis and its impact on asthma update (ARIA2008)—western and Asian-Pacific perspective. *Asian Pac J Allergy Immunol*. 2009; 27: 237-243
- Australian Institute of Health and Welfare 2019, Asthma Snapshot, AIHW: Canberra. Accessed online: aihw.gov.au/reports/chronic-respiratory-conditions/asthma/data

PARTNERS



STALLERGENES GREER
Life beyond allergy

Flo and Stallergenes Greer are campaign partners of Asthma Australia and have not been involved in the development of this resource.